

Faculty

Roland M. Schmid, Christoph Schlag, Janine Bachmann, Mohamed Abdelhafez, Interdisciplinary Endoscopy & Dept. of Medicine II, Klinikum rechts der Isar, Technical University Munich, Ismaninger Str 22, 81675 Muenchen, DE

Frieder Berr, Andrej Wagner
Paracelsus Medical University, Dept. of Medicine I, 5020 Salzburg, AT

Hans-Peter Allgaier
Department of Medicine, Diakoniekrankenhaus, 79110 Freiburg, DE

Franz-Ludwig Dumoulin
Department of Medicine, Gemeinschaftskrankenhaus, 53113 Bonn, DE

Jürgen Hochberger, Song-Sa Dammer
Dept. of Gastroenterology, Vivantes Klinikum, Landsberger Allee 10249 Berlin, DE

Sergey V. Kantsevov
Institute for Digestive Health & Liver Diseases, Mercy Med. Center, University of Maryland School of Medicine, Baltimore, MD, USA

Gerhard Kleber
Department of Medicine I, Ostalbklinikum, 73428 Aalen, DE

Alexandr Mitrovic
Endoscopy, Cancer Centre Hospital, 603126 Nizhnyi Novgorod, RF

Tsuneo Oyama, Akiko Takahashi
Department of Endoscopy, Saku Central Hospital Advanced Care, Center, Zip code 3850051, 3400-28 Nakagomi, Saku, Nagano, JP

Thierry Ponchon
Hôpital Edouard Herriot, Spécialités Digestives, Pavillon H, 69437 Lyon, FR

Hans Seifert
Dept of Medicine - Gastroenterology, Univ. Clinics, 26133 Oldenburg, DE

Takashi Toyonaga
Division of Gastroenterology, Department of Internal Medicine, Graduate School of Medicine, Kobe University, 7-5-1 Chu-o-ku, Kusunoki-cho, Kobe, Hyogo 650-0017, JP

Naohisa Yahagi
Cancer Center, Keio University, 35 Shinanomachi, Shinjuku-ku, Tokyo, 160-8582, JP

Edris Wedi
Gastroenterology & GI Oncology, Univ-klinikum, Göttingen, DE

Alexander Ziachehabi
Department of Internal Medicine IV, Elisabethinen Hospital, Ordensklinikum Linz, AT

Registration & Fee

Registration for ESD endoscopists under frieder.berr@pmu.ac.at **Booked out**
CME 17 DFP (BMC VNR 862118), EAC-CME pending

Participation fee 1200 € (ESGE members: 980 €)
Course, lunches & dinners and Update (Fri, June 28) included

Recommended B&B hotel (& course faculty accomodation):
www.motel-one.com/de/hotels/muenchen/hotel-muenchen-deutsches-museum/

Venues

- TranslaTUM Inst., Einstein Str 25, 81675 Muenchen
- Vet-medin. OP, Zentrum f Präklinische Forschung
- Endoskopie, Medizin. Klinik II, Klinikum rechts der Isar (MRI), Ismaninger Str 22, 81675 Muenchen



Endosurgical Expert Course

ESD Clinical Tutoring

Munich, June 26-27, 2019



Klinikum rechts der Isar
Technische Universität München



Organizers RM Schmid
Th Ponchon
F Berr

Ch Schlag
M Abdelhafez
A Wagner

Patient's advocat
E Wedi

Faculty

Allgaier H-P
Berr F
Dumoulin F-L
Hochberger J

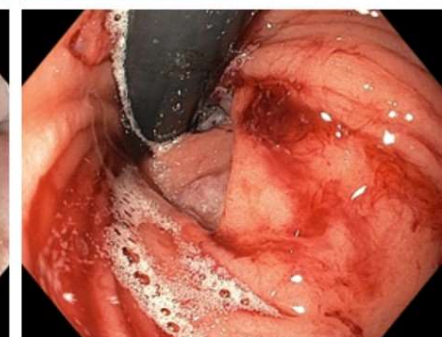
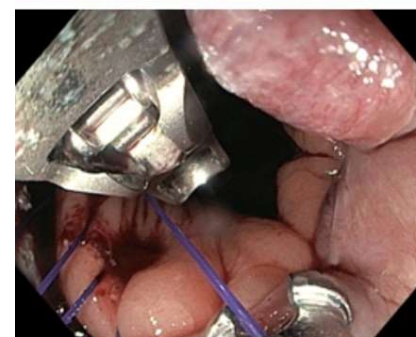
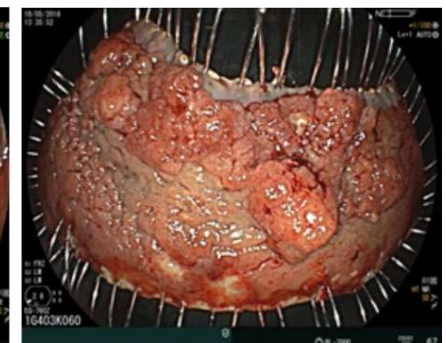
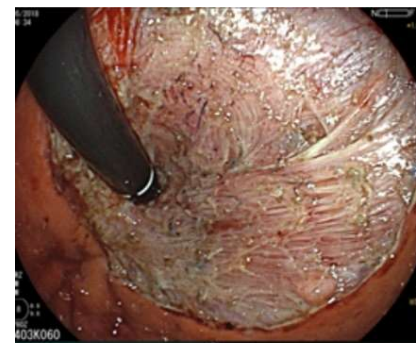
Kantsevov SV
Kleber G
Mitrovic A
Schlag Ch

Oyama T
Ponchon Th
Seifert H
Takahashi A

Toyonaga T
Wagner A
Wedi E
Yahagi N
Ziachehabi A

Certification 17 DFP

Contact www.early-cancer.eu



Sponsors



Leonie Wild Charitable Foundation



Dear colleagues,

the new course format offers ESD operators to improve the skill level for accurate endoscopic indication (i.e. prediction of pT category) and performance of ESD on lesions in colorectum, stomach, esophagogastric junction and esophagus – under direct preceptorship of national and international experts.

The aim is to promote the professional level of ESD for curative intention.

Ponchon Th. Schmid R.M. Berr F.

Wednesday, 26.06.2019

Endo-Skill & Know-How

Technical University Munich
Univ. Institut. TranslaTUM
* Vet-med. OP in ZPF
Einstein Str 25, Muenchen

Endoscopic Diagnosis & Skills Training 12:00 - 18:30

Eight tutors at working stations nr. 1 – nr.8, Teams (A – H) of three participants.
Rotation through stations #1 - #8 (45min) with simulation, ex-vivo and in-vivo organs.

Objectives, Working Stations & Tutors

I. Endo Diagnosis, Clipping Techniques, Platforms, Suturing (ex-vivo)

| | | | |
|---|---|---|--|
| #1 WAGNER, PONCHON Image analysis | #2 HOCHBERGER Dammer Clipping devices | #3 MITRAKOV, KANTSEVOY contin. Suturing | #4 ZIACHEHABI, KANTSEVOY Platforms |
|---|---|---|--|

Coffee Break 15:00 – 15:30

II. Dissection Techniques, Strategies, and Hemostasis (in-vivo*)

| | | | |
|---|---|---|--|
| #5 YAHAGI, SCHLAG DualKnife-J | #6 OYAMA, TAKAHASHI HookKnife-J | #7 TOYONAGA, WEDI FlushKnife-BT | #8 SEIFERT, Fuschlberger HybridKnife |
|---|---|---|--|

18:30 END

20:00 Dinner with faculty (Hofbräu-Keller)

Objectives:

- Accurate Endoscopic Indication for Resection Technique
- Skills and Strategies for ESD Technique
- Suturing and Prevention of Complications

Groups of eight participants will be observing the ongoing ESD procedure

| Endo Room | Nr. 1 | Nr. 2 | Nr. 3 |
|----------------------|--|--------------------------------------|--|
| Dept. doctor | Abdulhafez M | Bachmann J | Schlag Ch |
| 8:00-12:00 | | | |
| Tutor | Oyama/Takahashi | Hochberger | Yahagi |
| Lesion | Recurrent Eso-phageal SCC 0-IIb | Esophageal SCC, 0-IIb+IIc, bifocal | #1 Ulc. Colitis [Dx] #2 LST-GM rectum |
| Diagnosis | Lutz M (referring) | Kleber G (referring) | Wagner A / Schlag C |
| ESD assistant | Takahashi A | participant | participant |
| Moderator | Lutz, Ponchon | Toyonaga, Ziachehabi | Schlag, Berr |
| 12:00 – 13:00 | Lunch | | |
| 13:00-17:00 | | | |
| Tutor | Oyama/Takahashi | Toyonaga | Yahagi / Kantsevoy |
| Lesion | Barrett E. C12M16, trifocal AC uT1a, G1 | Esophageal SCC, bifocal, 6 mo p. ESD | Colonic LST-NGs (4x) Anal lesion [? Dx] |
| Diagnosis | Kleber G (referring) | Wagner (referring) | participant |
| ESD assistant | participant | participant | participant |
| Moderator | Kleber, Seifert | Hochberger, Wagner | Dumoulin, Kantsevoy |
| Pat.'s advocat | Edris Wedi | | |
| 17:15 | END | | |
| 19:30 | Dinner with faculty (Augustiner am Dom) | | |

Endo Skill Update
Muenchen 2019

Friday, June 28, 2019: 8:00 - 16:15
Technical University, TranslaTUM, Einstein Str 25
(included in course, see Update program)